



X-Slate Shower Trays

Fitting Guide



INSTALLER NOTICE

This tray must be installed on a flat and level substrate/floor.

! Before you Start

Please read these instructions fully before starting. Although these instructions are comprehensive we always recommend that a technically competent installer undertake the installation.

Unpack and check that the shower tray is the colour, size, shape and type you require. Allow the shower tray to rest on a flat surface in a warm room then check for any damage. **Do not install if not satisfied and contact your local supplier.**

Check that the top surface of the shower tray is compatible with your intended shower enclosure, taking into account the loss of dimension that will result if the tray has been cut or trimmed to fit the available area and after tiles etc have been fitted.

The compatibility of the top surface of the tray and an enclosure is especially important if using a shower tray with a built in tiling upstand.

If you install this shower tray in conjunction with a steam unit, you must ensure the steam outlet is at a minimum of 350mm from the top of the tray.

When considering your installation method, you should be able to attach or repair your waste or waste outlet in-situ.

A full drainage test of the shower tray should be carried out on a level surface prior to the installation or cutting commences.

! Important

When handling your shower tray take care not to damage the bottom edges and when installing take particular care to protect the visible surfaces from impact damage or abrasions.

! Safety Notes

Caution: Care must be taken when drilling into walls or floors to avoid hidden pipes or electrical cables.

This product is heavy and requires a 2-person lift.

i Care & Use of Your Shower Tray

These installation instructions should be retained and passed to the user for possible future reference.

It is normal for small amounts of localized water to be retained on the shower tray surfaces after use which should be wiped dry immediately to prevent build up of sediments.

The shower tray should be cleaned regularly with warm, soapy water only and dried with a cloth. Never use scourers, abrasives, bleach or other chemical cleaners.

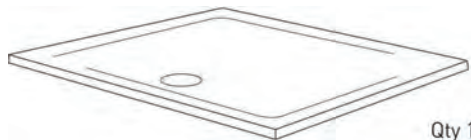
i Technical Help

Technical Service Line: 0113 201 2260 Open Mon - Fri 8.30 - 4.30pm

Dimensions are nominal and shown in millimetres unless otherwise stated. Manufacturing tolerances of 1% - 2% may be present.

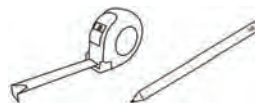
Parts Supplied

Shower Tray (Shape and style of tray may differ from that illustrated)



Tools and Materials Required

(not supplied)



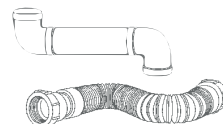
Tape Measure and Pencil



Spirit Level



Safety Eyewear and Dust Mask



Plumbing Pipe and Fittings



90mm Hi-flow Waste Unit
(Remove chrome cover)



Trowel



Silicone Sealant



Floor Screws and Screwdriver



Plywood Board (min 18mm thick)



Masking Tape



Power Drill & Drill Bits



Jigsaw



60 Grit Sand Paper



Hole Cutter



Angle Grinder

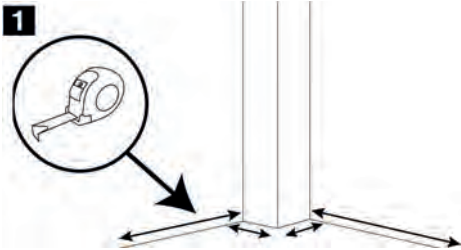
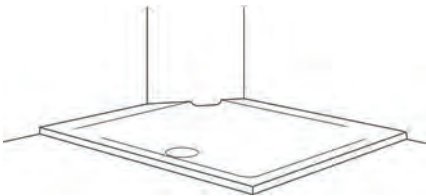
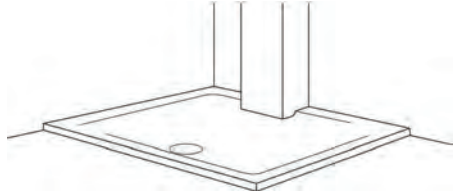
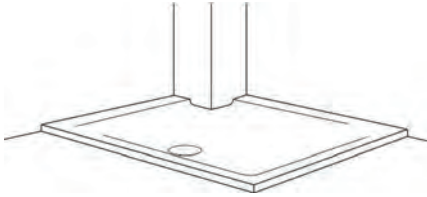


4in/102mm or larger fine edge diamond
grinder blade (suitable for cutting stone)

Note! Other tools and materials may be needed depending on the specific site requirements.

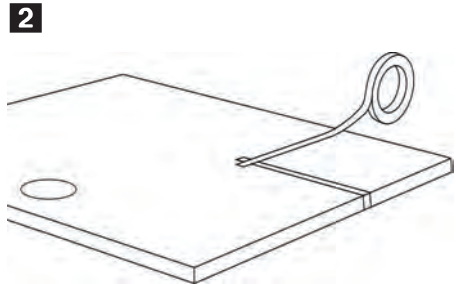
Cutting the Tray

Your unique X-Slate shower tray is the ideal solution to modern bathroom shapes and obstacles enabling rapid adaptation to almost all situations.



Carefully measure the available area for your intended shower tray.

Note! Ensure the outer tray dimensions remain suitable for your intended enclosure taking into account the reduced area that will result after any trimming or cutting of the shower tray.



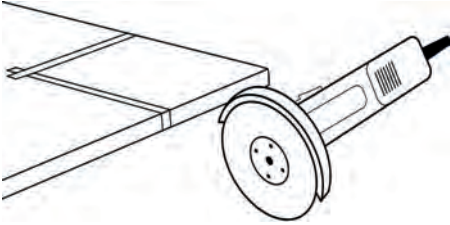
Mark the lines to be cut on the face of the tray using masking tape or other suitable marking method.

Note! Double check the area marked on the face of the shower tray is correct when the tray is in-situ. DO NOT PROCEED IF NOT SATISFIED.

CAUTION! Before proceeding use safety eyewear and clothing at all times.

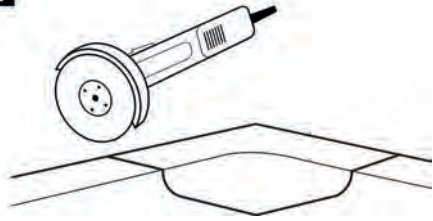
Cutting the Tray

3



Carefully cut the marked area from the shower tray using a minimum of a four inch (approx 102mm) diamond blade (suitable for cutting stone) on an angle grinder or other suitable cutting tool.

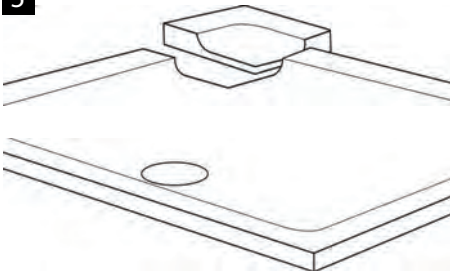
4



It may be necessary to turn the shower tray over to obtain a through cut on the thicker section of the periphery of the tray, depending on the size of the blade being used.

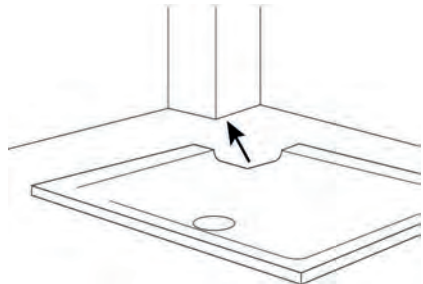
Note! Do not force the rate of cutting and only cut at the speed of the cutter to avoid separation of the tray layers.

5



Taking care not to damage the visible surface, carefully remove any loose material and tidy the cut edge using 60 Grit (or similar grade) sand paper.

6



Test fit the shower tray in-situ making any further adjustments as necessary to ensure a snug fit.

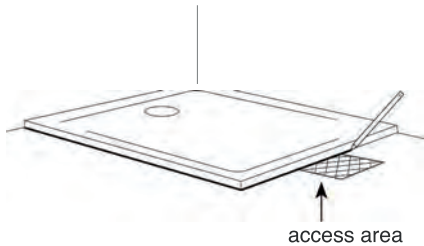
Note! It is normal for the tray to appear elastic when undertaking a dry test fitting.

Once you are satisfied, complete the installation by following the procedure for solid or suspended floors as appropriate.

DO NOT PROCEED IF NOT SATISFIED.

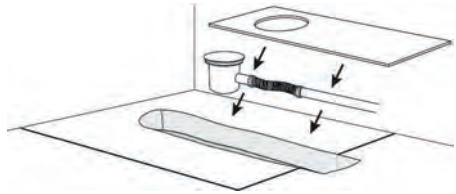
Installation-Solid Floor

1



Place the shower tray in position on the floor (ensuring surface is level) and mark the perimeter and waste hole on the floor including an area outside the perimeter for access to connect plumbing (as dictated by the installation location) after the shower tray has been installed.

2



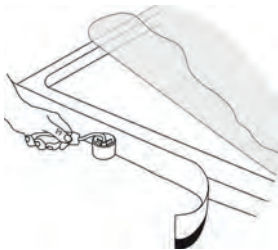
Form a trench in the floor to hold the waste unit and piping.

Before proceeding, dry fit all items in-situ to ensure compatibility.

Install the waste unit and piping in the trench in accordance with building regulations, protecting any exposed threads with masking tape.

If necessary, blank off the trench using 18mm ply with waste outlet hole, ensuring that the plumbing connections can be made once the shower tray is in position.

3



Note! Some shower trays have a protective film (indicated by a label on the surface) which must now be removed. Undertake a final inspection of the shower tray at this stage. DO NOT PROCEED IF NOT SATISFIED.

We recommend the use of a Flexi Seal Strip (not supplied).

4



Use a high grade flexible silicon adhesive to cover the full area under the shower tray. Apply or trowel to a thickness suitable to allow full adhesive support of the shower tray.

Note! Always follow the instructions supplied with the adhesive.

INSTALLER NOTICE

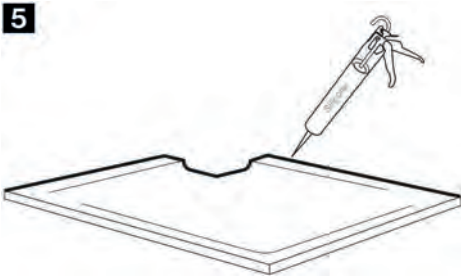
Floor Level Installation for Concrete or Other Solid Floors

6

This tray must be installed on a flat and level substrate/floor.

Installation-Solid Floor

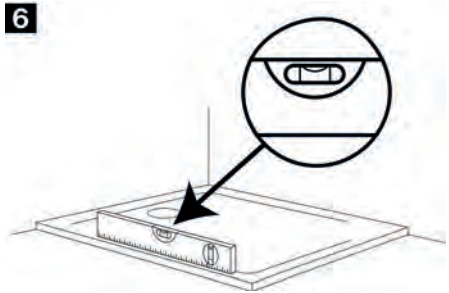
5



Before fitting, apply copious amounts of silicone to the edges of the shower tray against all wall contact points.

This is especially important on any edges of the tray that have been cut or trimmed.

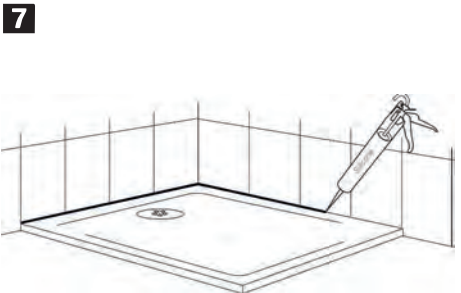
6



Place the shower tray onto the wet adhesive ensuring that it is fully supported by the mix. Check the level of the top rims only as the shower tray has a built in fall for adequate drainage.

Note! Ensure tray is fully stuck down - weight down if necessary to ensure level and that good contact is made with the adhesive.

7



When the adhesive has set, remove any excess mix and masking tape, then make connection between the shower tray and waste piping. The shower tray and all connections MUST now be checked for water tightness, flow and adequate drainage over the entire area.

DO NOT PROCEED IF NOT SATISFIED.

After all checks and adjustments, tile and then seal along the tiling line with silicone sealant.

8

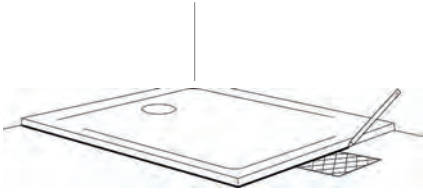


Fill in the access area in front of the shower tray.

If fitting a shower enclosure refer to the manufacturers installation instructions.

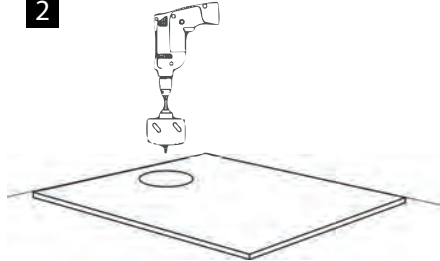
Installation-Suspended Floor

1



Place the shower tray in position on the floor (ensuring surface is level) and mark the perimeter on the floor including an area outside the perimeter for access to connect plumbing (as dictated by the installation location) after the shower tray has been installed.

2

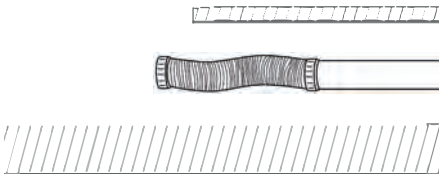


The floor area (or larger) covered by the shower tray must be removed and replaced with a single level piece of plywood (minimum 18mm thick).

Put the plywood in position, ensuring the area is flat and level. Place the shower tray on the plywood and mark the waste hole location.

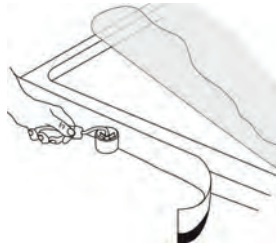
Remove the shower tray then use a hole cutter to drill a hole in the plywood large enough to pass through the entire waste unit. Keep all holes to the minimum.

3



Remove the plywood and install the waste outlet pipe in the cavity in accordance with building regulations.

4



Note! Some shower trays have a protective film (indicated by a label on the surface) which must now be removed. Undertake a final inspection of the shower tray at this stage. DO NOT PROCEED IF NOT SATISFIED.

We recommend the use of a Flexi Seal Strip (not supplied).

INSTALLER NOTICE

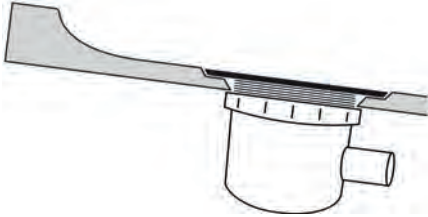
Floor Level Installation for Suspended Floors

8

This tray must be installed on a flat and level substrate/floor.

Installation-Suspended Floor

5



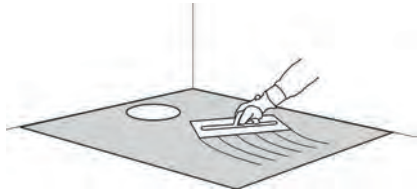
Fit the waste unit to the shower tray following the instructions supplied with the unit and protect exposed threads with masking tape.

Please note that the chrome waste cover needs to be removed.

Before proceeding dry fit all items in-situ to ensure compatibility and then screw the plywood level into position.

Note! It is normal for the tray to appear elastic when undertaking a test dry fitting.

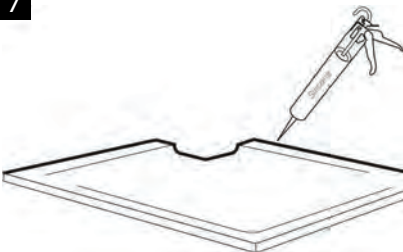
6



Use a high grade flexible silicone adhesive to cover the full area under the shower tray. Apply or trowel to a thickness suitable to allow full adhesive support of the shower tray.

Note! Always follow the instructions supplied with the adhesive.

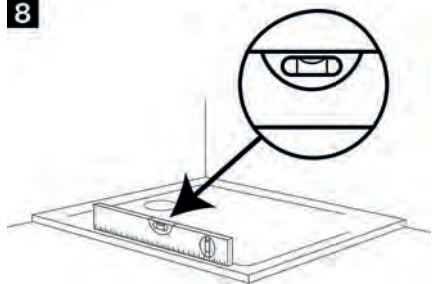
7



Before fitting, apply copious amounts of silicone to the edges of the shower tray against all wall contact points.

This is especially important on any edges of the tray that have been cut or trimmed.

8

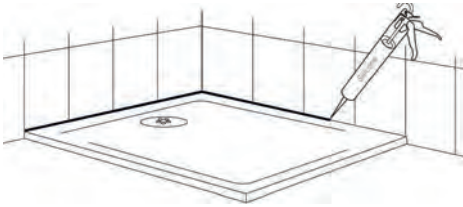


Place the shower tray onto the wet adhesive ensuring that it is fully supported by the mix. Check the level of the top rims only as the shower tray has a built in fall for adequate drainage.

Note! Ensure tray is fully stuck down - weight down if necessary to ensure level and that good contact is made with the adhesive.

Installation - Suspended Floor

9



When the adhesive has set, remove any excess mix and masking tape then make connection between the shower tray and waste pipe. The shower tray and all connections **MUST** now be checked for water tightness, flow and adequate drainage over the entire area.

DO NOT PROCEED IF NOT SATISFIED.

After all checks and adjustments, tile and then seal along the tiling line with silicone sealant.

If fitting a shower enclosure refer to the manufacturers installation instructions.

10

Floor Level Installation for Suspended Floors

! Troubleshooting

Q Can I cut large areas of the tray?

A Yes, providing that the outer dimension of the enclosure is maintained and that the waste outlet area is not affected.

Q Can I use a Panel Riser Kit with this type of shower tray?

A No.

Q The waste outlet in the shower tray is directly over an obstruction at floor level.

A Consider re-locating or rotating the shower tray.

Q There is water retaining on the surfaces of the tray.

A Check that the shower tray is level (top rims] as it is normal for small amounts of localized water to be retained. A drainage test on a level surface should be carried out prior to installation commencing.

Q Water will not flow fast enough down the waste outlet.

A Check that the waste unit is correctly installed and that outlet pipe is the correct size and has sufficient fall/angle and is not kinked or sagging causing an air blockage. Refer to relevant building regulations.

Q The enclosure will not fit on the shower tray.

A Check that you have maintained the outer dimensions of the tray after any cutting adjustments and that the available surface on top of the tray is compatible with the size, shape and adjustment range of your enclosure.

Q Water escapes from a fitted walk-in or frameless enclosure.

A It is normal for spillage to occur from walk-in or frameless type enclosures, consider fitting a threshold seal or changing to a fully framed enclosure.

Q Could I have a carpet on the floor in the bathroom?

A It is advised that you use only safety vinyl or tiled flooring in the bathroom area with the addition of a safety mat or floor towel to step onto after showering.

PHOENIX[®]
THE RETAIL BRAND